



RENEWABLE ENERGY

Electro-mechanical
(Wind Power & Photovoltaic PV)

Al Own Advanced for Contracting

Abdelrahman Abu Hasan 4B
Amman, 11953

Phone: +962 (6) 5518466
Email: info@atgce.com



Al-Own Advanced For Contracting Co. L.t.d
شركة العون المتطورة للمقاولات ذ.م.م

Al Own – Renewable Energy Profile

INTRODUCTION

Al-Own Advanced for Contracting (AAC) is one of the leading companies in Jordan with a history of 35 years of Success and Development in the fields of Mining, Construction and Engineering, since it was established in 1983 with an initial paid up capital of \$14 million and a turnover around \$ 550 million.

Al Own is a private company, fully owned by Engineer Aref Yousef Al Tarawneh and Engineer Mohammad Yousef Al Tarawneh, of which they supervise and manage a staff of more than 1000 employees, a fleet of mechanisms with more than 450 machines and a group of 20 companies.

The company has reached the highest classification in various fields in the contracting and engineering sectors. In addition to, complying with the ISO standards in Quality, environmental and Health & Safety Management.

Certificate Links: [AO-ISO](#)

VISION

Al-Own pursues its strategic objective of establishing itself as a leader among local and regional companies by introducing the most technologically advanced equipment alongside our highly experienced professionals.

MISSION

- Our objective is to deliver high-quality, cost-effective projects in a highly competitive market.
- We maintain high levels of commitment and transparency throughout our business deals and sustain solid long-term relationships with our clients.
- AAC adheres to building unique reputation in the fields of construction and mining industry through providing highly qualified standards of services, fully equipped with high-tech machinery and equipment.
 - AAC executes Lump Sum Turnkey (LSTK), Engineering, Procurement, and construction (EPC) and Lump Sum Building (LSB) projects; such entails combining technical expertise with immense knowledge and high caliber.

Electro-Mechanical (Wind Power & Photovoltaic) Key Projects AI Own

1. Al-Rajef Wind Farm 86.1 MW
2. Ma'an Wind Farm 80 MW
3. Mass Wind Farm 100 MW
4. Al-Risha Solar Power Project Development 50 MW
5. The Construction and Erection Works for the Potash Storage Facilities

1. AL-RAJEF WIND FARM

Project Value: USD 12 Million ➤ **Client:** Green Watts Renewable Energy
➤ **Status:** 100% Completed

The project Includes the construction of access roads, trenching, pipelaying, and erection of 41 turbines (G114-2100KW) with a total power capacity of 86.1 MW.

2. MA'AN WIND FARM

Project Value: USD 10 Million ➤ **Client:** Ministry of Energy & Mineral Resources
➤ **Status:** 100% Completed

The project Includes the construction of access roads, trenching, pipelaying, and erection of 40 turbines (2 MW) with a total power capacity of 80 MW.

3. MASS WIND FARM - TAFILAH

Project Value: USD 10 Million ➤ **Client:** GE Power & Water

➤ **Status:** 100% Completed

The project Includes the construction of access roads, trenching, pipelaying, and erection of 28 turbines (3.6 MW) with a total power capacity of 100 MW.

4. AL-RISHA SOLAR POWER PROJECT DEVELOPMENT

Project Value: USD 10 Million ➤ **Client:** Sterling & Wilson

➤ **Status:** 100% Completed

The project Includes the construction of access roads, trenching, pipelaying, and electro-mechanical works of photovoltaic with a total power capacity of 50 MW.

5. THE CONSTRUCTION AND ERECTION WORKS FOR THE POTASH STORAGE FACILITIES

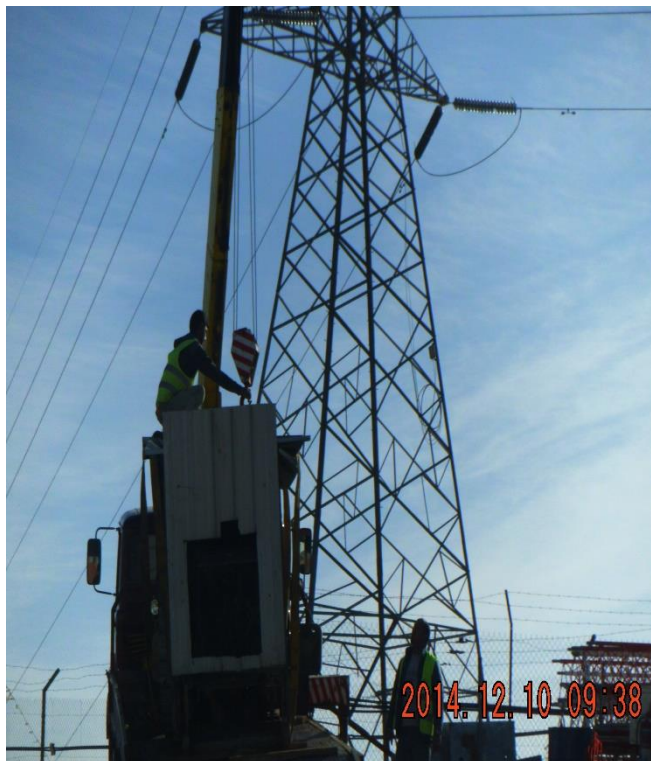
Project Value: USD 12 Million ➤ **Client:** The Arab Potash Company Ltd

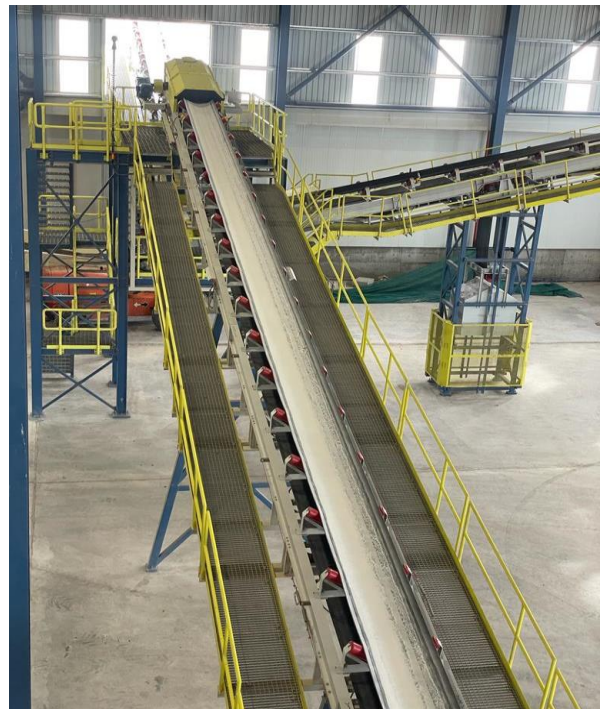
➤ **Status:** 100% Completed

The project Includes the construction and erection works for the potash storage facilities and dispatch system.

PROJECTS GALLERY







EQUIPMENT

Al Own owns and operates a fleet of specialized equipment for mining, earthworks, and construction projects. A summary of the major fleet equipment is listed below:

- Excavators (40-300 Ton) CAT & KOMATSU
- Dump Trucks (25-100 Ton) CAT & MERCEDES
- Wheel Loaders sizes (5m³ - 12m³) CAT & KOMATSU
- Drilling Rigs (Atlas Copco & CAT)
- Bulldozers D8 & D9 & D10 CAT
- Motor Graders CAT & KOMATSU
- Concrete Pumps & Mixers (PUTZMEISTER & LIEBHERR)
- Asphalt Machinery CAT & HAM & WIRTGEN
- Mobile Cranes GROVE & TEREX
- Ramming Machines
- Screens & Crushers (Fixed and Mobile Plants)
- Rollers, Scraper and Pavers
- Shipping and Transport Mechanisms
- Genset Generators All Sizes
- Fuel, Anfo, Water and Service Trucks
- Light Vehicles, Forklifts, Telehandlers & Tankers

SERVICE & MAINTENANCE DEPARTMENTS

Our fully equipped and conveniently located workshop facilities provide a comprehensive range of mining and construction equipment repairs and maintenance services which are conducted both in house and on-site. Based in Al Abiad, Jordan, our workshops are renowned as one of the best in the country. Supervised and managed by qualified mining and construction plant engineers with a shared commitment to service excellence.

All component rebuilds are done to OEM standards and best practices, and our component repairs and rebuilds come with an OEM parts warranty. From our Al Abiad operation we have a full stocked warehouse where parts and components around (\$15 million) can be transported to any location in the world to support our operations.

PROJECT GALERY



KEY CLIENTS

- Ministry of Public Works and Housing
- Greater Amman Municipality
- The Jordanian Armed Forces
- Jordan Phosphate and Mining Company
- Water Authority of Jordan
- Maaden Phosphate Company MPC
- Ministry of Municipal and Rural Affairs
- Ministry of Energy and Mineral Resources

SUPPLIERS AND PARTNERS

